



PRODUCT DESCRIPTION

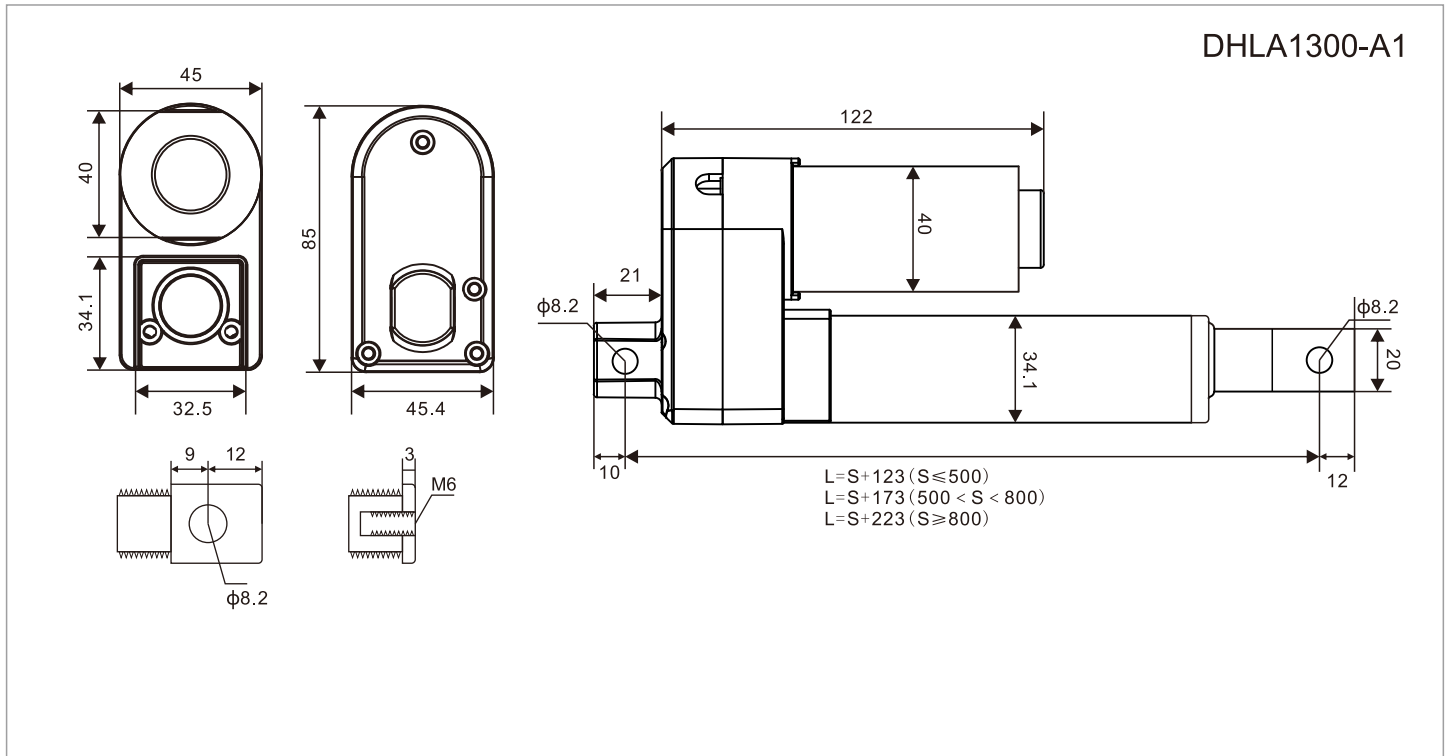
DHLA1300 is a cheap electric linear actuator, 30W motor 1500N load force. This product is less noisy than most electric linear actuators on the market, and has a large self-locking force. The outer tube adopts a square aluminum tube, a plastic gear box structure, and a 35dB low-noise DC motor.

This linear actuator has a variety of installation methods: $\Phi 8$ lifting lug installation, plate installation, M6 thread installation

TECHNICAL PARAMETERS

Voltage	DC24~32V					DC12~19V												
No-load Speed (MM/S)	5		12		25		40		52	10		20		30		40		66
Load Pull Capacity(N)	1500		1000		500		400		200	800		400		300		200		150
Load Push Capacity(N)	1500		1000		500		400		300	800		400		300		200		150
Self-locking Capacity(N)	1500		1000		500		400		300	800		400		300		200		150
Stroke Length	50mm-1000mm																	
Motor Power	30W																	
Operating Temperature	-10°C~+55°C																	
Limit Switches	Built-in																	
IP Grade	IP43																	
Material	Aluminum																	
Noise	< 30dB																	
Operating Frequency	10%max 2min. continuous use																	
Inner Tube	Aluminum Tube																	
Lead Screw Type	Type T																	
Mechanical Life	More than 50,000 times																	

OUTLINE DIMENSION DRAWING



OUTLINE DIMENSION DRAWING

